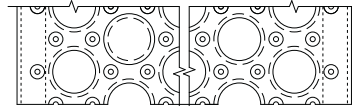
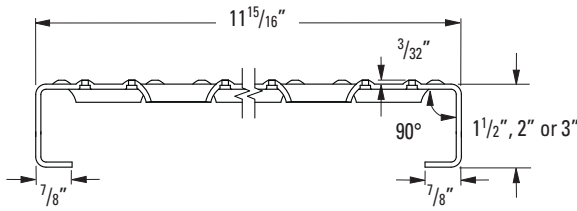
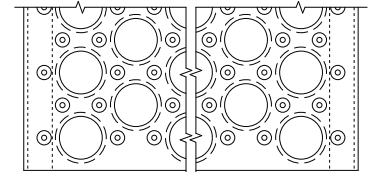


Grating Load Tables

PERF-O GRIP™ — 6-Hole Plank — 12" Width



PERF-O GRIP



PERF-O GRIP 2

Plank Selection/Design Tables

Allowable Loads and Deflections: U=Uniform Load (lb./ft.²) C= Concentrated Load (lb.) D=Deflection (in.)

Material Gauge	Channel Depth in. (mm)	Weight lb./lin. ft. (kg/m)	Catalog Number	Span																		
				2'-0"	2'-6"	3'-0"	3'-6"	4'-0"	4'-6"	5'-0"	5'-6"	6'-0"	6'-6"	7'-0"	7'-6"	8'-0"	9'-0"	10'-0"	11'-0"	12'-0"		
Steel 13 ga.	1 1/2" (38.1)	4.3 (6.4)	P61513* A61513	U	669	655	456	336	258	204	166	138	117	100	87	76	67	54	44	37	31	
				D	.03	.07	.10	.13	.17	.22	.27	.33	.40	.47	.55	.63	.72	.92	1.16	1.43	1.68	
	2" (50.8)	4.6 (6.8)	P62013* A62013	U	1510	966	671	493	378	299	243	201	170	145	126	110	97	77	63	53	45	
				D	.03	.05	.07	.10	.13	.16	.20	.25	.29	.35	.40	.46	.53	.68	.85	1.03	1.25	
	Steel 11 ga.	1 1/2" (38.1)	5.3 (7.9)	P61511* A61511	U	986	739	515	378	291	230	188	156	131	112	97	85	75	60	50	41	35
					D	.03	.06	.09	.12	.16	.21	.25	.31	.37	.43	.50	.57	.65	.82	1.02	1.25	1.50
2" (50.8)		5.5 (8.2)	P62011* A62011	U	1937	1240	861	633	486	385	312	259	218	186	161	140	124	99	80	67	57	
				D	.03	.05	.07	.10	.13	.16	.20	.24	.29	.34	.40	.46	.52	.67	.83	1.01	1.22	
3" (76.2)		6.2 (9.2)	P63011* A63011	U	3828	2450	1701	1250	957	757	614	507	427	365	315	274	242	192	156	130	108	
				D	.02	.04	.05	.07	.10	.12	.15	.18	.22	.25	.29	.34	.39	.49	.61	.74	.87	
Alum. 0.125"	2" (50.8)	2.1 (3.1)	P620125* A620125	U	1463	936	650	478	366	290	235	194	163	140	120	104	93	73	60	49	41	
				D	.08	.12	.17	.23	.30	.38	.47	.57	.68	.79	.92	1.05	1.20	1.52	1.88	2.27	2.70	
	2" (50.8)	3.2 (4.7)	P62016S* A62016S	U	1289	825	573	421	322	255	206	170	143	122	105	91	80	64	51	42	35	
				D	.04	.07	.10	.13	.17	.22	.27	.33	.39	.46	.53	.61	.69	.88	1.08	1.30	1.54	
	16 ga.	2" (50.8)	3.2 (4.7)	P62016S* A62016S	U	1252	1002	835	715	626	556	501	469	430	397	368	343	322	286	257	234	215
					D	.03	.05	.07	.10	.13	.17	.21	.26	.31	.37	.42	.49	.55	.70	.86	1.05	1.25

* PERF-O GRIP: To order standard PERF-O GRIP grating use part number "Pxxxxx".

PERF-O GRIP 2: To order New PERF-O GRIP 2 grating use part number "Axxxxx". End margins are standard on new PERF-O GRIP 2 grating 2-Hole through 6-Hole plank only (5" through 12" widths). Standard lengths are 10'-0" and 12'-0".